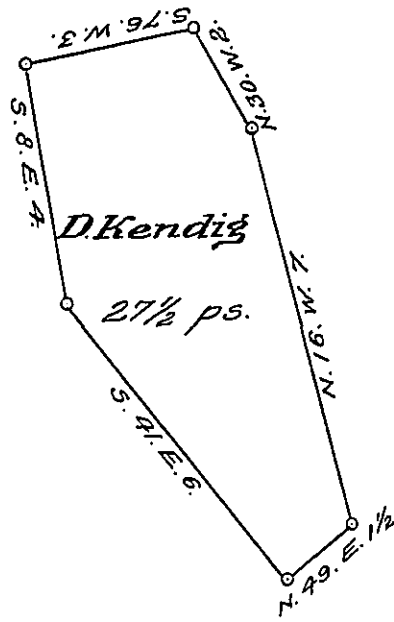


York County shore.



Lancaster County shore.

A Draught of Crane Island situate in the river Susquehanna in Conestogo Township Lancaster County Opposite to land of John Hess and Opposite the head of Big Beaver Island containing twenty seven perches and an half strict measure surveyed in pursuance of a Warrant dated the 4th day of November A.D. 1816 granted to Daniel Kendig

p^r Jacob Hibshman D.S.

To Jacob Spangler Esq^r }
 Surveyor General }

IN TESTIMONY that the above is a copy of the original remaining on file in the Department of Internal Affairs of Pennsylvania, made conformably to an Act of Assembly approved the 16th day of February 1833, I have hereunto set my hand and caused the Seal of said Department to be affixed at Harrisburg, this twenty first day of January 1908.

Henry Howell
 Secretary of Internal Affairs.